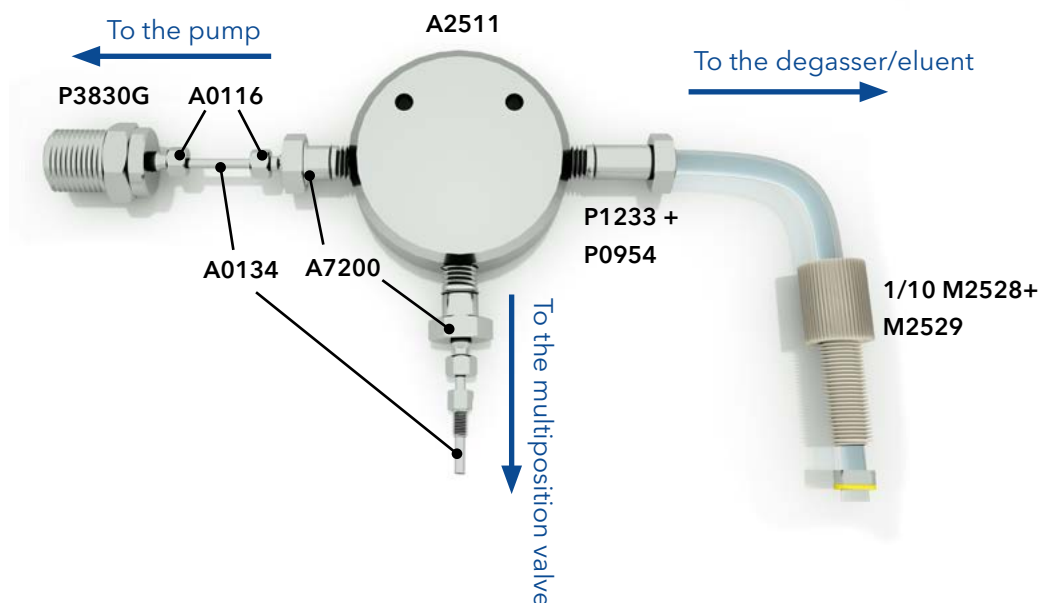


Recycling kit for AZURA® Pump P 6.1L


The recycling kit (order no. A58208) can be used to convert the AZURA® Pump P 6.1L isocratic or HPG for peak recycling. Connect the parts as shown in the figure below:



To install the recycling kit, proceed as follows:

Disconnection of the inlet tube to the pump:

1. Remove the fitting of the pump head inlet (see AZURA P 6.1 L manual) together with the attached inlet tube.
If you have the HPG version of the AZURA P 6.1L, remove the pump head inlet of pump A.

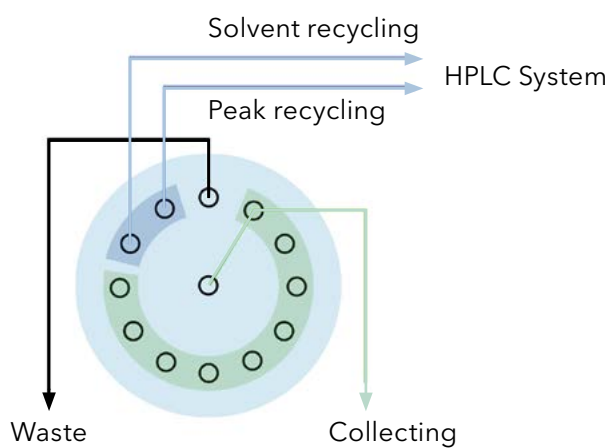
 **Note:** In case you have an AZURA P 6.1L with degasser, also remove the fitting on the outlet side of the degasser for pump A.

Installation of the recycling kit:

1. Connect the outlet bushing P3830G with the pump head inlet. Therefore, follow the instructions to undo and tighten of the pump head inlet fitting as described in the pump manual.

 **Note:** When installing the kit at an HPG pump, the kit has to be connect to pump A.

2. Connect the stainless-steel capillary with the last but one port of the fraction valve according to the figure below:



3. Insert the tube in the eluent bottle.

Note: If you have a pump with degasser, connect the flat bottom fitting (M2528 and M2529) with the degasser outlet for pump A.